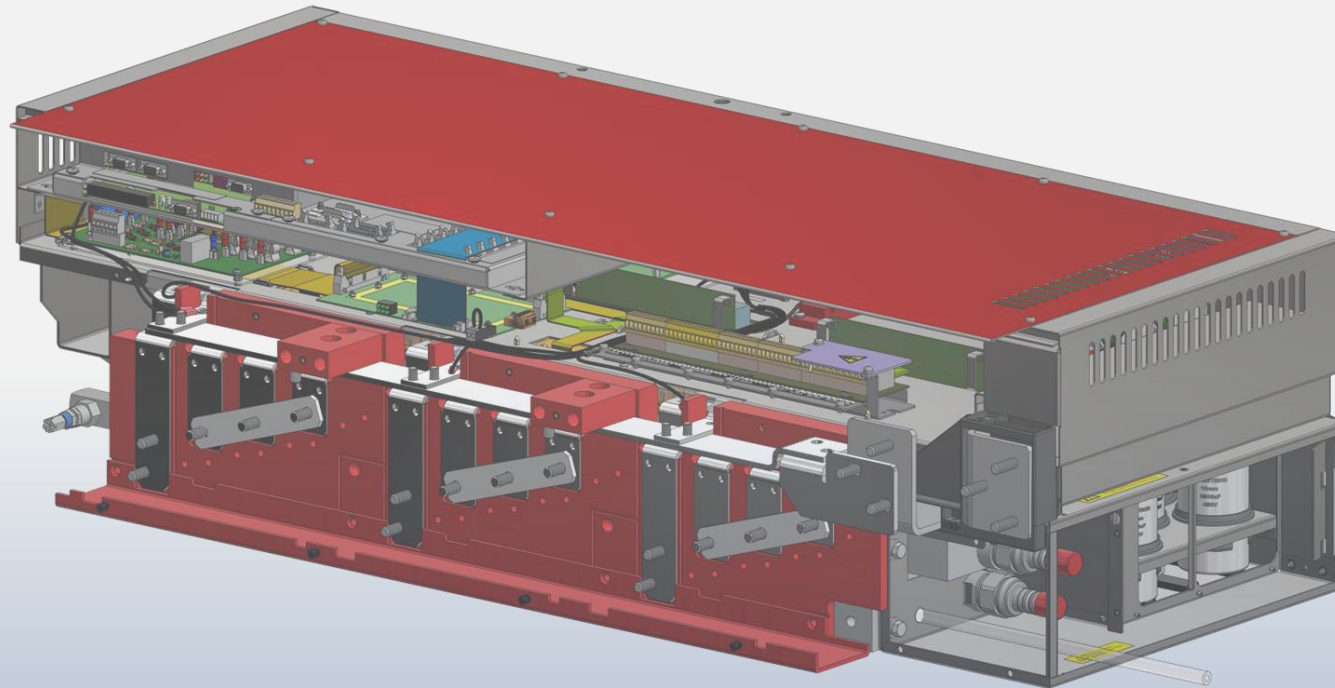
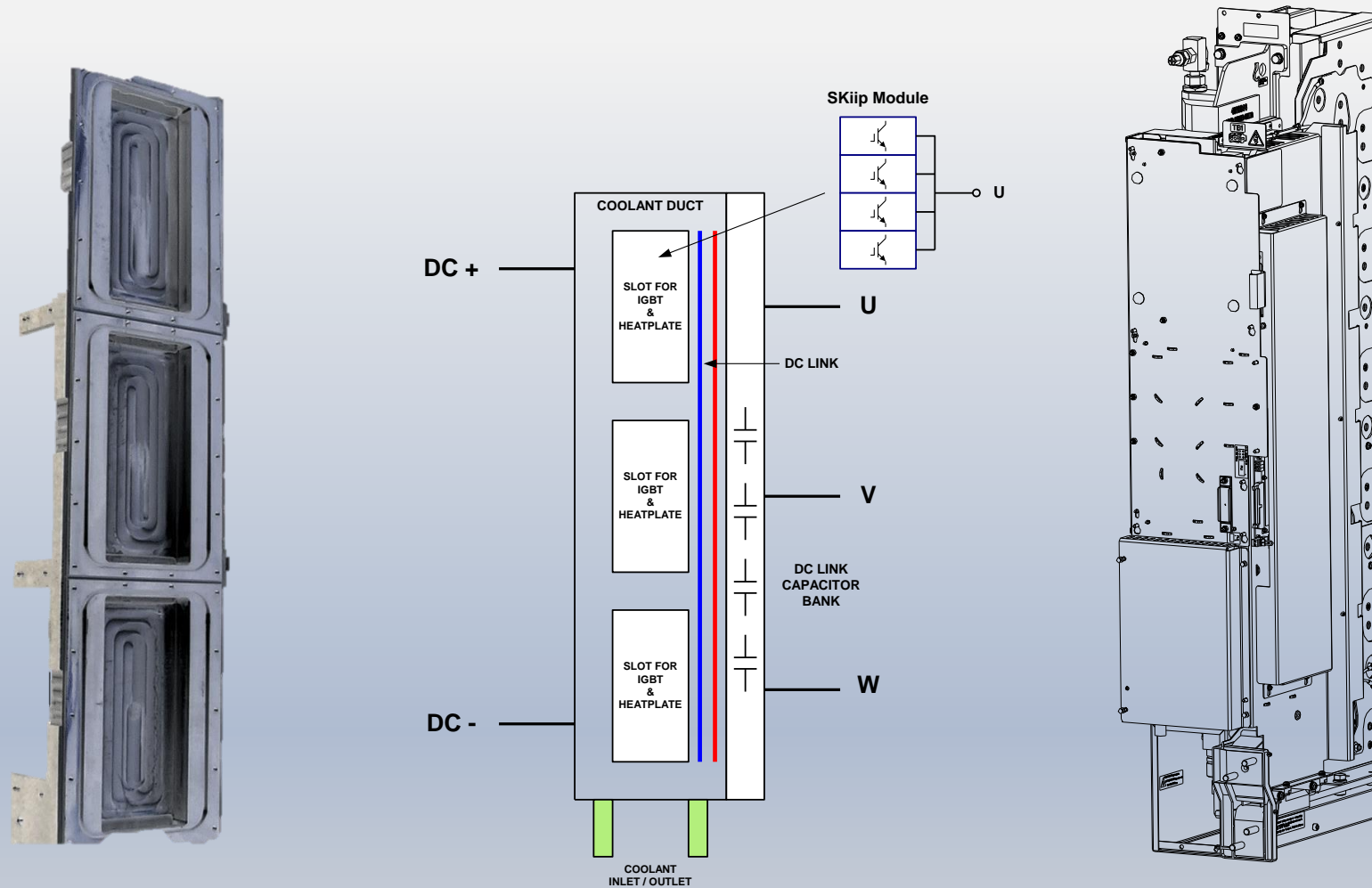


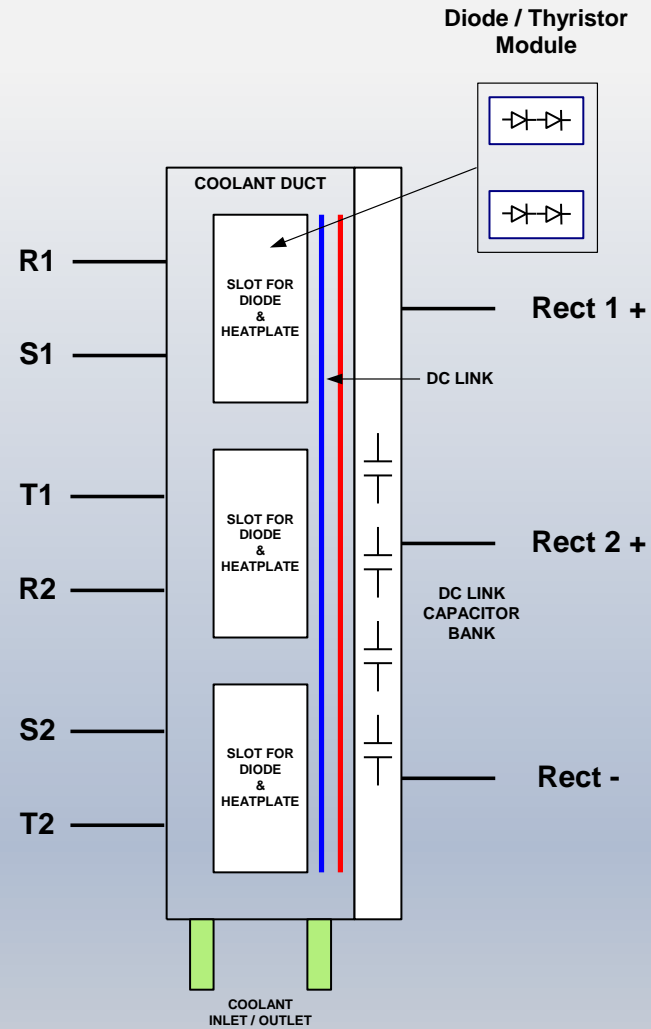
# LIQUID COOLED AED UNITS FROM AVID CONTROLS



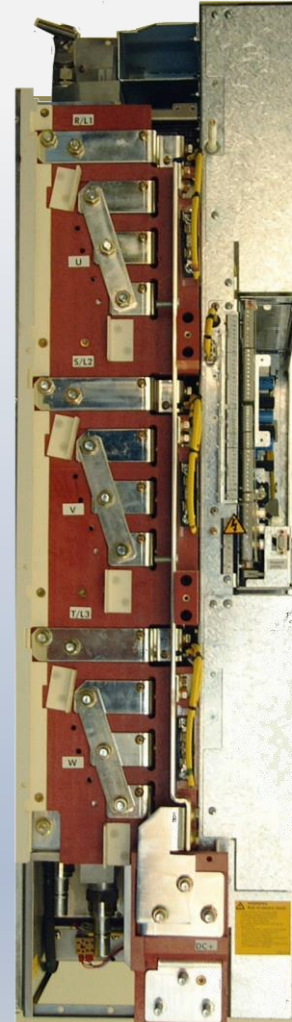
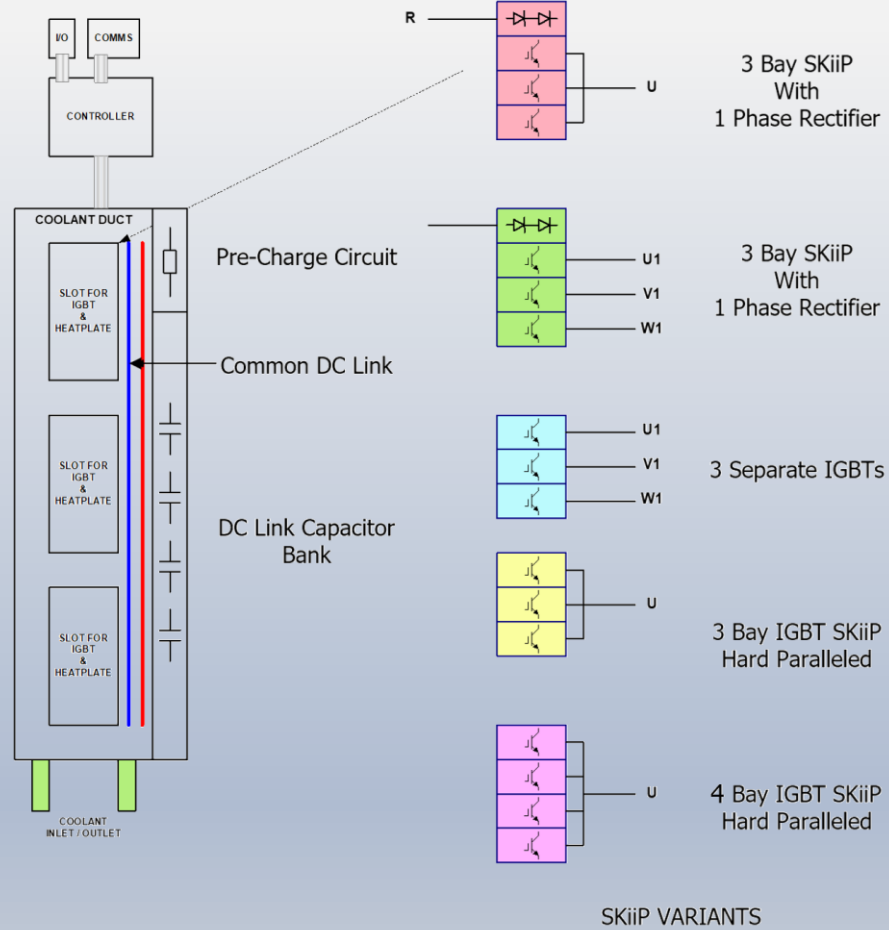
## STRUCTURE OF REGULAR DELTA MODULE



# STRUCTURE OF REGULAR RECTIFIER MODULE



# BUILDING BLOCKS OF LIQUID COOLED AED



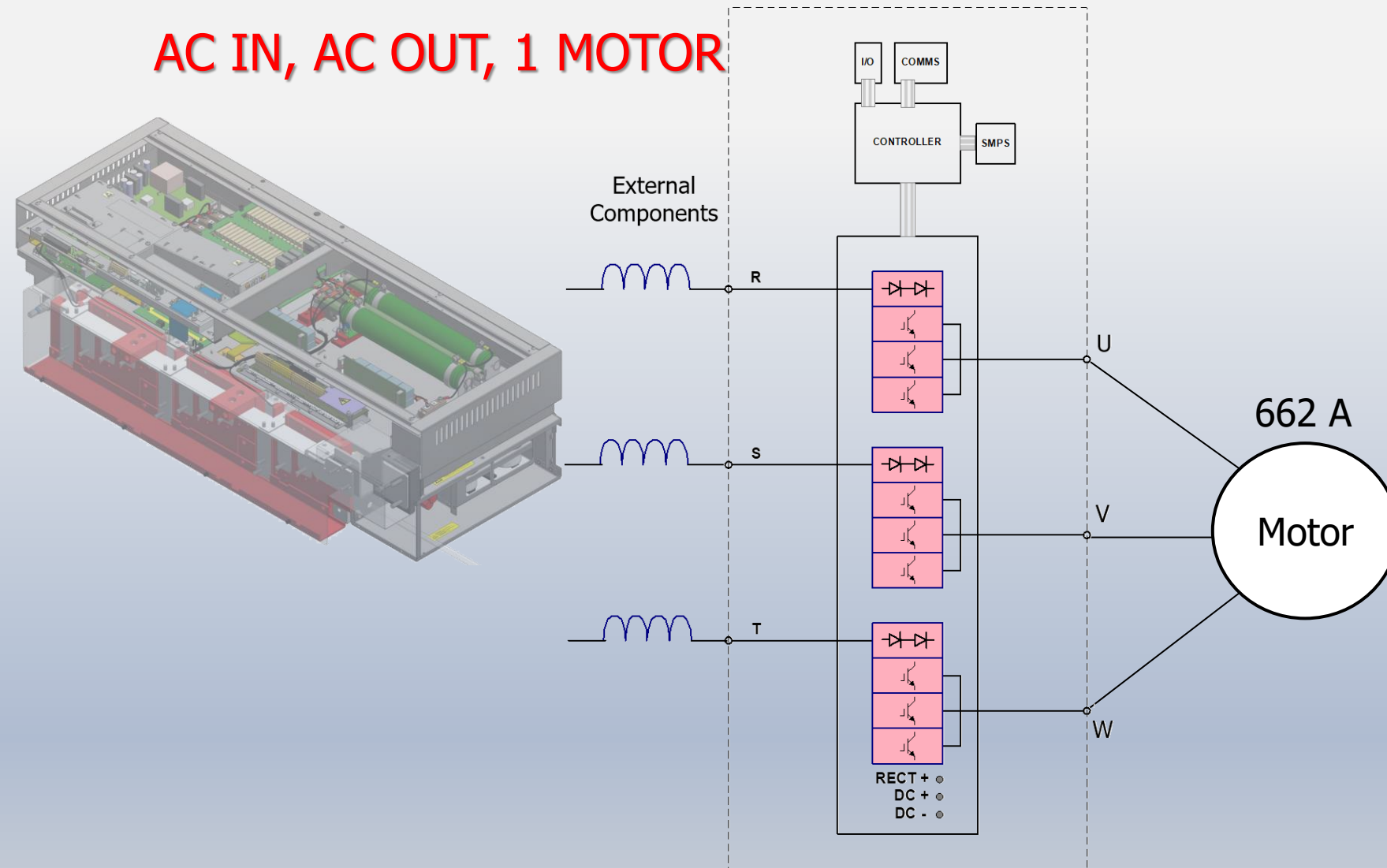
The LC BDM uses the identical coolant duct – but with a choice of different types of SkiiP modules to make an array of new products with different connection possibilities.

e.g.

- Single motor output with rectifier
- Three motor output with rectifier
- DC fed versions of above

### AC IN, AC OUT, 1 MOTOR

MV3662-A



In the single motor LC BDM, 3 x single phase SKiiPs each have a local rectifier enabling a 3-Phase drive to be made with a 6-pulse input rectifier.

The addition of an external input line reactor and coupling to a liquid cooling circuit completes the drive.

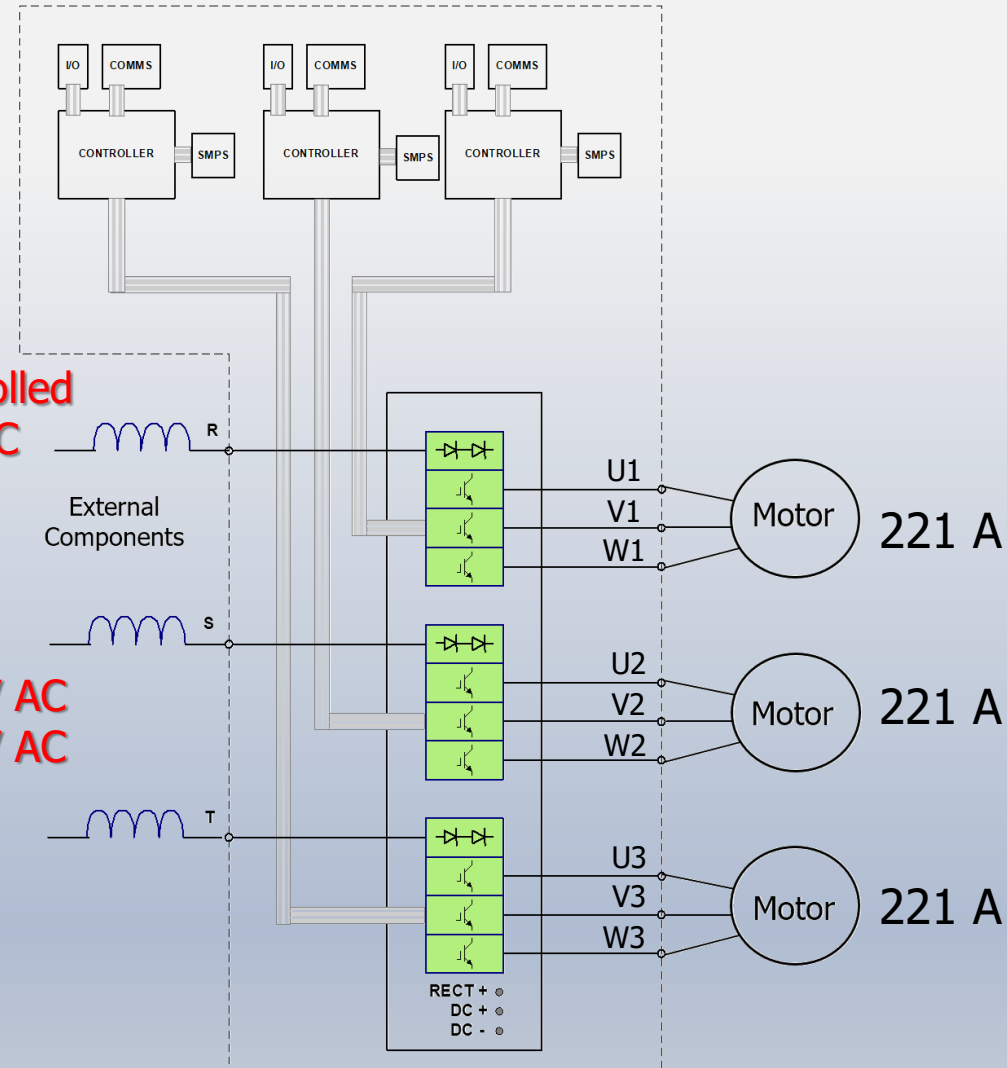
The modules are available in two ratings:

- MV3662-A4-A nominally rated at 440/480V
- MV3662-A6-A nominally rated at 600/690V



## AC IN, 3 X AC OUT, 3 MOTOR

MV3221-A



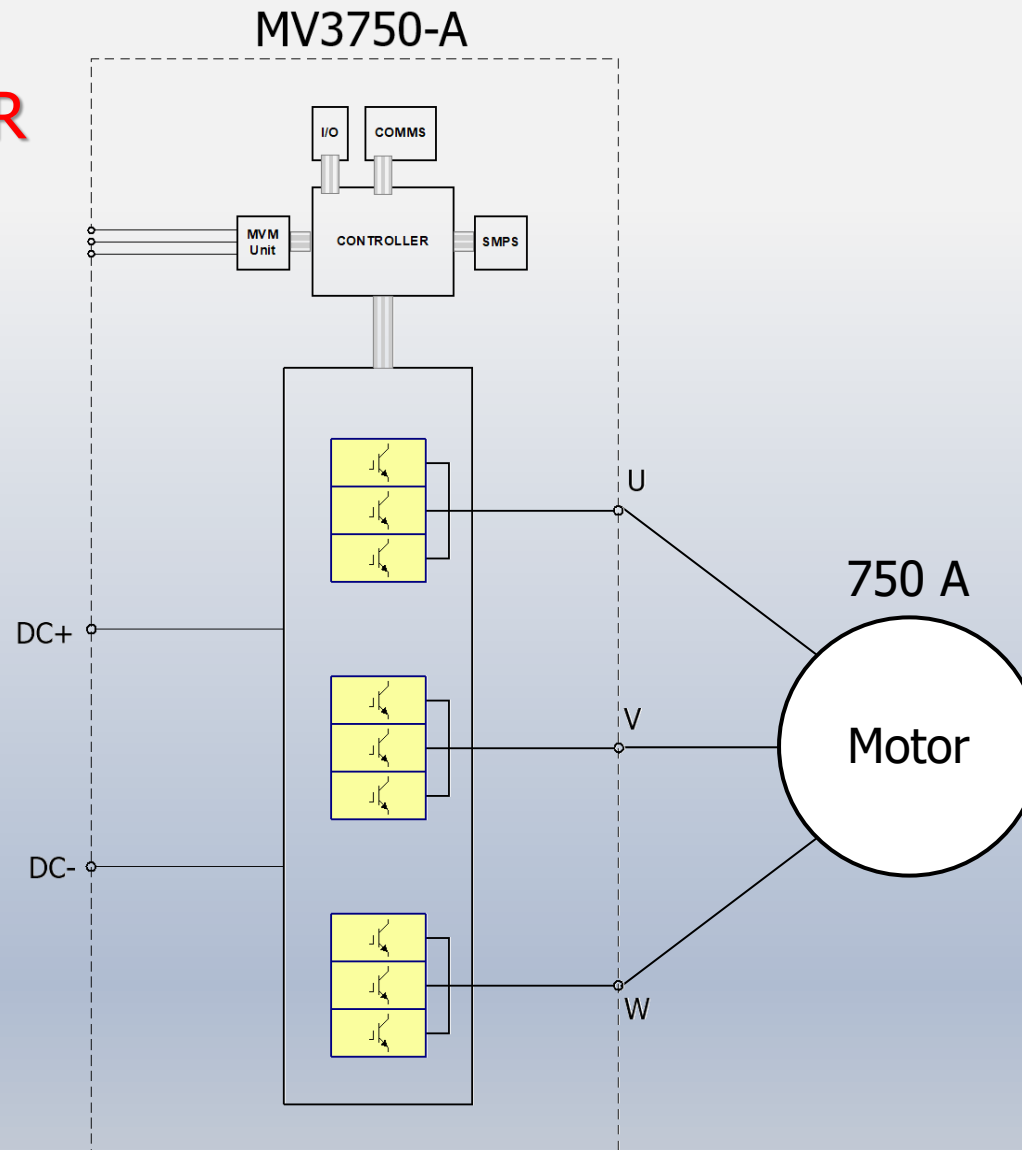
By using 3 x 3 Phase SKiiPS and 3 controllers, the one module can control 3 motors - all independently controlled and fed from the one 6-pulse rectifier on a common DC link.

The modules are available in two ratings:

- MV3221-A6-A which is nominally rated at 600/690V AC
- MV3221-A4-A which is nominally rated at 440/480V AC

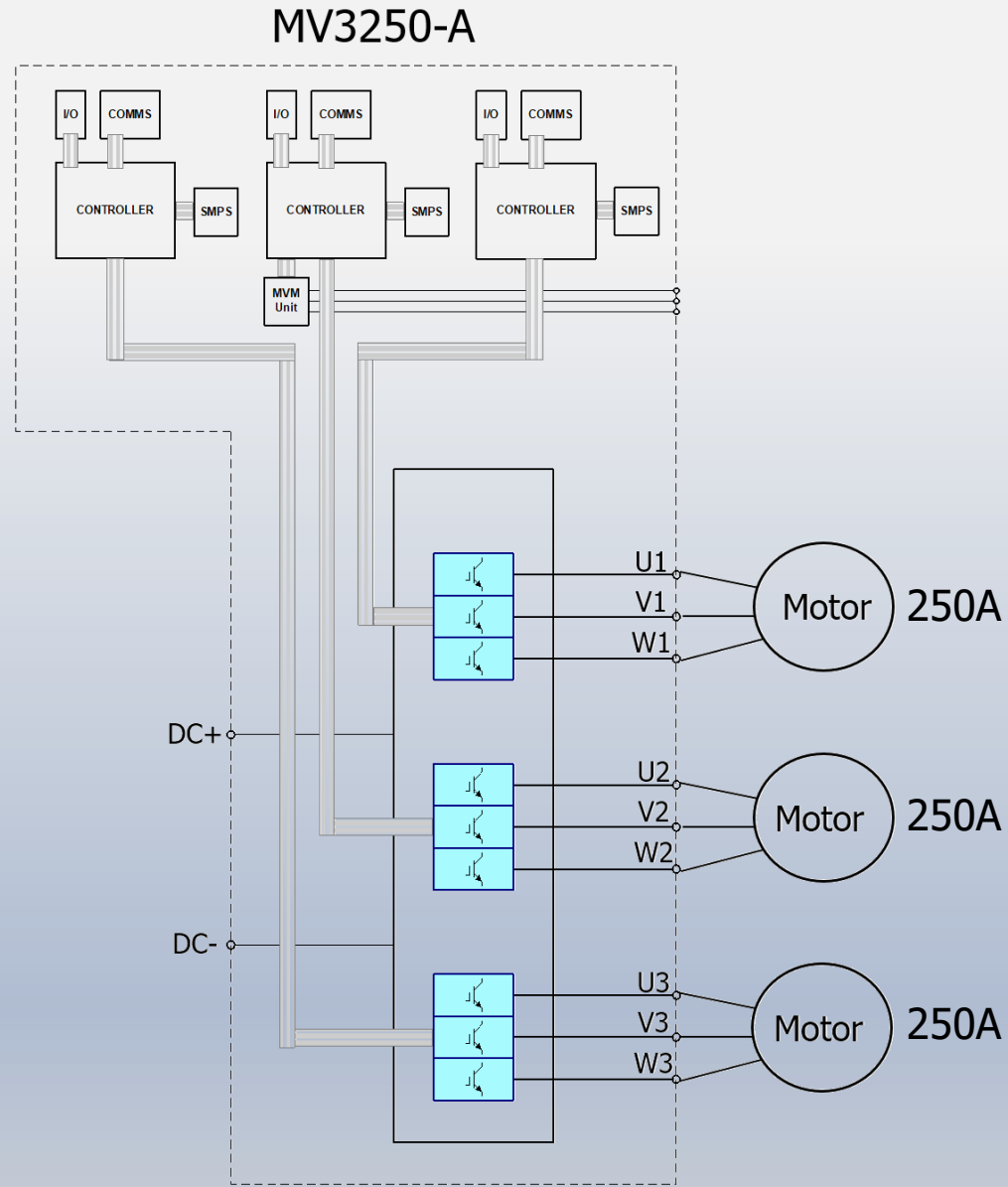
### DC IN, AC OUT, 1 MOTOR

A 3-Phase drive DC fed



DC IN, 3 X AC OUT, 3 MOTOR

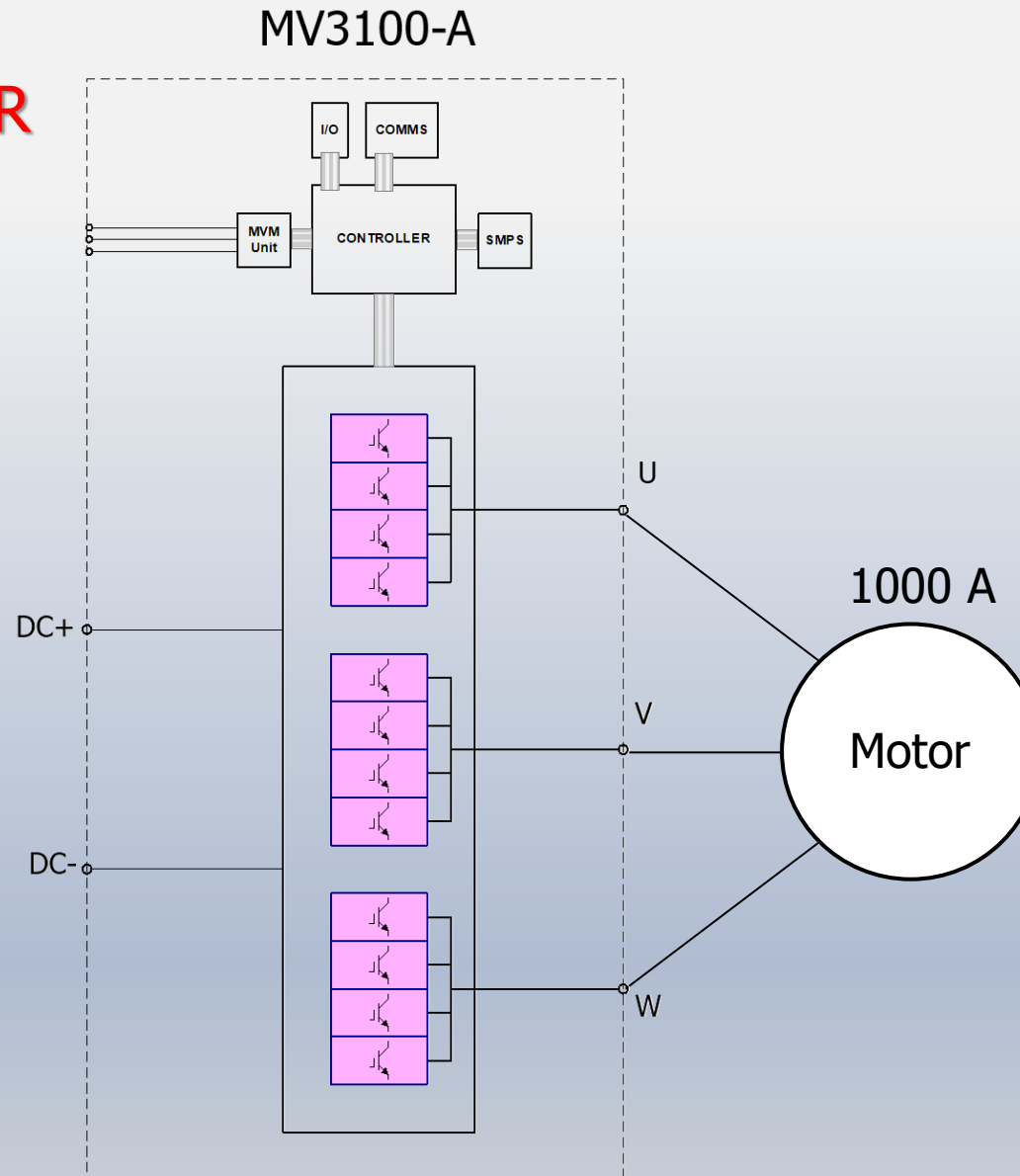
3 x 3 Phase drives DC fed

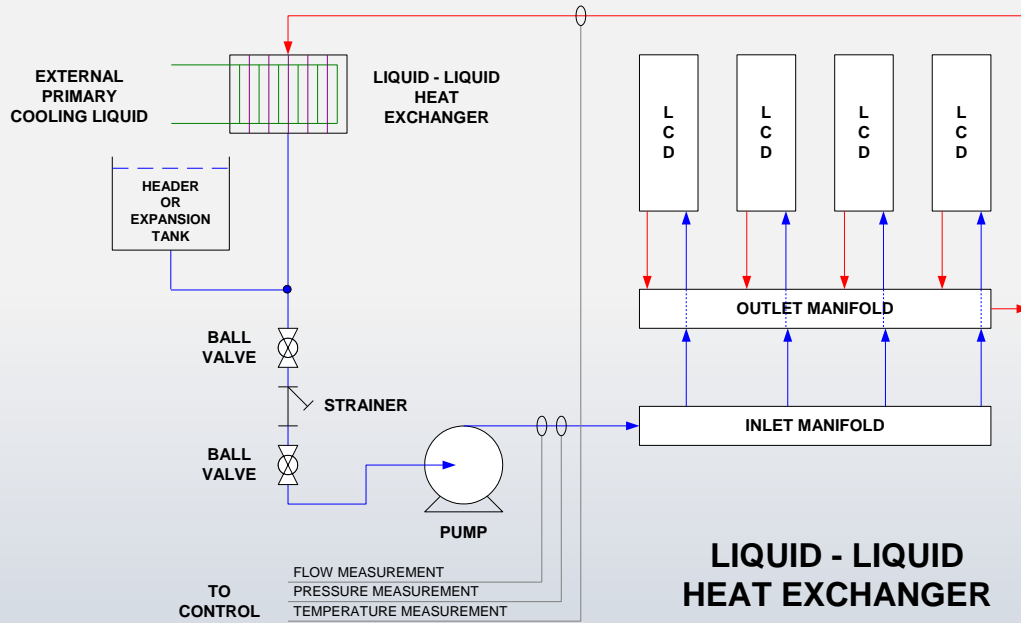




### DC IN, AC OUT, 1 MOTOR

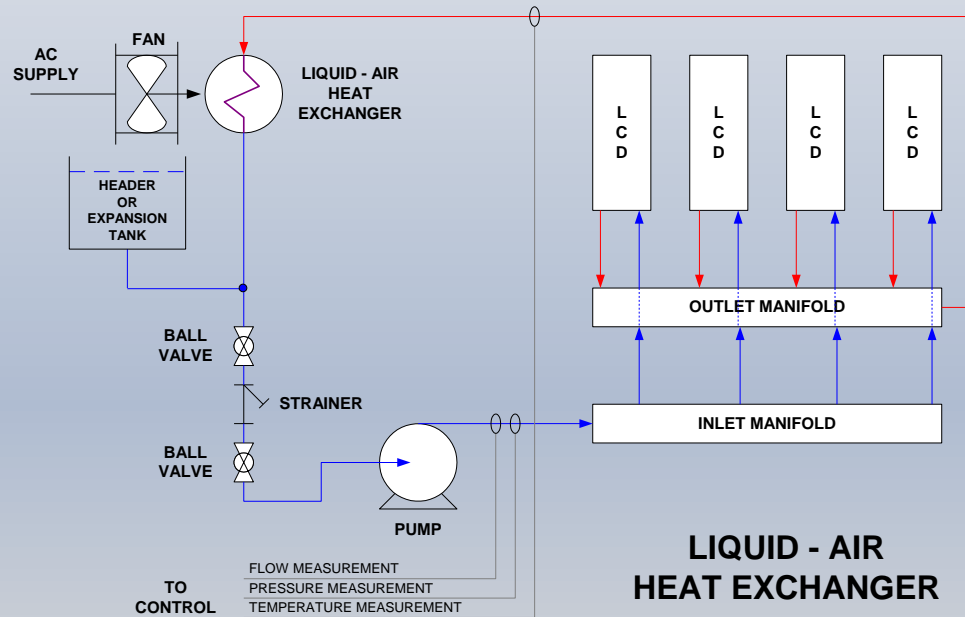
A larger 3-Phase drive DC fed





## Liquid Cooling...

- Water/Glycol coolant
- 25 liters/min
- Use with external pump and heat exchanger
- Connection via Staubli self sealing connectors



Thank you for your time. Please  
contact us at  
[sales@avidcontrolsinc.com](mailto:sales@avidcontrolsinc.com)